

1

2

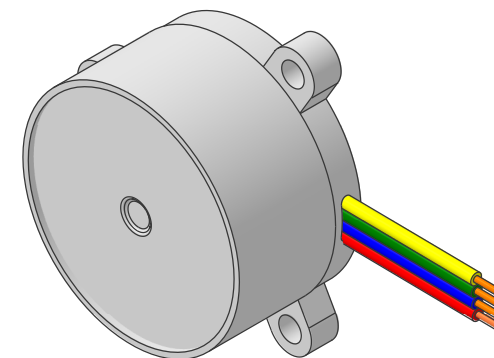
3

4

5

6

For use with the Minimag P-Drive controller



A

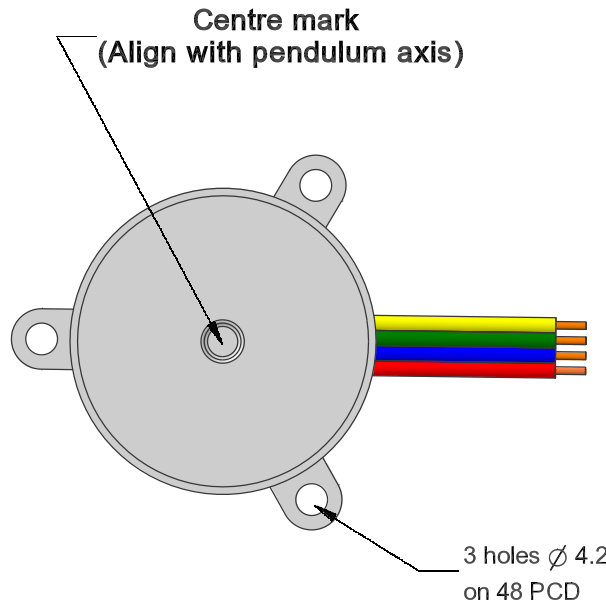
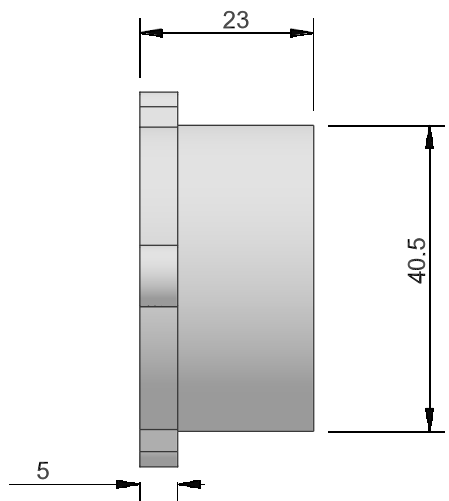
A

B

B

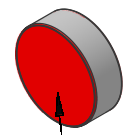
C

C



YELLOW drive pulse
 GREEN pendulum sense
 BLUE ground
 RED + supply 3 to 15 volts DC


Actuating Magnet 8x1 or 8x2 or 8x3 or 8x5 N52 or 15x5 N42



Marked side faces the SPC3

D

D

Drawn by JK	CHKD BK	MTL PET-G print and epoxy fill	22 July 2019	Scale 1:1
Minimag Co. Brighstone Isle of Wight			High power pendulum driver	
			SPC3.AD-DRW	Edition 3